



petroleum equipment manufacturing solutions



2022

ABOUT US

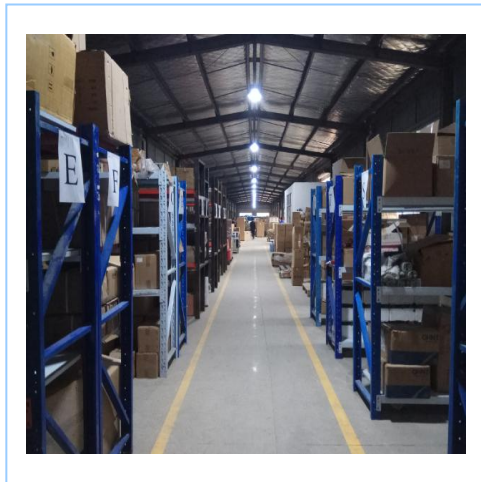
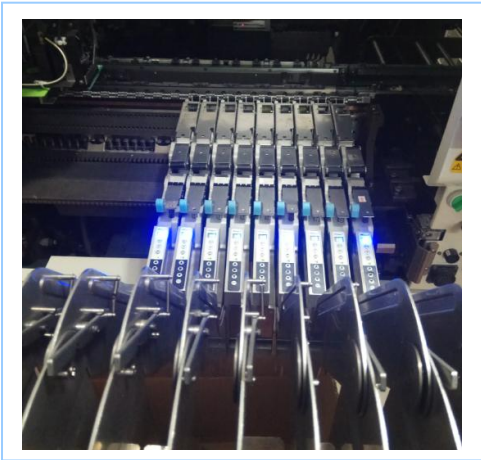
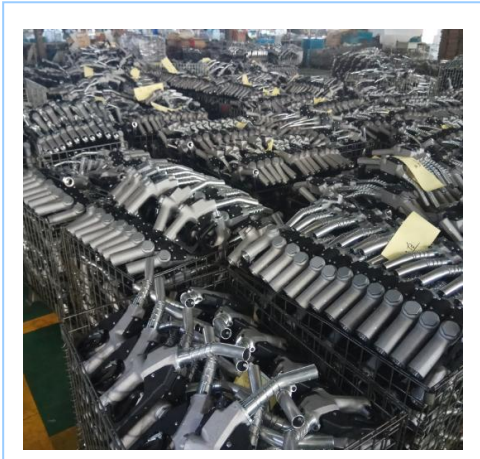
TSIT was initially established in 1988 in Ningbo, started as electrical motors and pumps manufacturer serving the local agricultural industry and also provide OEM for overseas companies. Since the business grows, our people constantly focus on the R&D. With bases of metal work experience, we expanded our production range in petroleum equipment products in 2001. Product covers in transfer nozzle, pump, flowmeter, gasstation parts, control unit etc. Due to the boast in business, in 2019 we set up a new branch plant in JX province, which covered surface area of 33,000 m^2 with 180 employees, an inhouse R&D laboratory, electronic lab, PCB workshop. Metal workshop, and production workshops. We always focusing on our people who represent the real treasure of the company, we provide systematic training to our worker in terms working skills, technology, working safety and all aspects.

Beside the domestic market, our business also plays in the US, Canada, Brasil, Argentina, Peru, Europa include Itlay, Germany, Poland. The UK, Australia, Russia, Ukraine ,Indonisia, India, Singaport, etc.

We are contantly commit to develop quality and new products to serve our customers and your voice are always more than welcome!



WORKSHOPS



01 TRANSFER NOZZLES



Automatic Nozzle

Item No.: TSN-11

Inlet: BSP3/4"

Ext.Dia.of Spout:20/24mm optional

Max. Flow:60L/min

Fluids Type:Diesel/Gasoline/Kerosene



Automatic Nozzle

Item No.: TSN-11 PLUS

Inlet: BSP3/4"

Ext.Dia.of Spout:20/24mm optional

Max. Flow:60L/min

Fluids Type:Diesel/Gasoline/Kerosene



Automatic Nozzle

Item No.: TSN-11AP

Inlet: BSP3/4"

Ext.Dia.of Spout:20/24mm optional

Max. Flow:60L/min

Fluids Type:Diesel/Gasoline/Kerosene



Automatic Nozzle

Item No.: TSN-120

Inlet: BSP1"

Ext.Dia.of Spout:30mm

Max. Flow:120L/min

Fluids Type:Diesel/Gasoline/Kerosene



Automatic Nozzle

Item No.: TSN-Z1

Inlet: BSP1"

Ext.Dia.of Spout:20/24mm optional

Max. Flow:60L/min

Fluids Type:Diesel/Gasoline/Kerosene

01 TRANSFER NOZZLES



No pressure-No Flow Automatic Nozzle

Item No.: TSN-11B

Inlet: BSP3/4"

Ext.Dia.of Spout:13/16" 15/16" optional

Max. Flow:45L/min 60 L/min

Fluids Type:Diesel/Gasoline/Kerosene



No pressure-No Flow Automatic Nozzle

Item No.: TSN-7HB

Inlet: BSP3/4"

Ext.Dia.of Spout:1-13/16"

Max. Flow:120L/min

Fluids Type:Diesel/Gasoline/Kerosene



Vapour Recovery Nozzle, No Pressure No Flow

Item No.: TSN-VW

Inlet: M34×1.5

Ext.Dia.of Spout:19mm

Fluids Type: Gasoline

Color of Insulator: red/green/blue/yellow/black



Vapour Recovery Nozzle With Proportional Valve

Item No.: TSN-VR

Valve Inlet: BSPF3/4"

Valve Outlet: M34×1.5

Ext.Dia.of Spout:19mm

Fluids Type: Gasoline

01 TRANSFER NOZZLES



Heavy Duty Automatic Nozzle

Item No.: TSN-200

Inlet: BSP1.5"

Ext.Dia.of Spout:38mm

Max. Flow:260L/min

Fluids Type:Diesel/Gasoline/Kerosene



Heavy Duty Automatic Nozzle

Item No.: TSN-1290

Inlet: BSP1.5"

Ext.Dia.of Spout:38mm

Max. Flow:250L/min

Fluids Type:Diesel/Gasoline/Kerosene



Heavy Duty Manual Nozzle

Item No.: TSN-DP

size: 1" 1.5" 2"

Max. Flow:100L/250/300/min

Fluids Type:Diesel/Gasoline/Kerosene



Manual Nozzle

Item No.: TSN-M1

Inlet: BSP1"

Ext.Dia.of Spout: 24mm

Max. Flow:60L/min

Fluids Type:Diesel/Gasoline/Kerosene



Manual Nozzle

Item No.: TSN-M2

Inlet: BSP1"

Ext.Dia.of Spout: 24mm

Max. Flow:60L/min

Fluids Type:Diesel/Gasoline/Kerosene

01 TRANSFER NOZZLES



Manual Nozzle With Turbine Flowmeter

Item No.: TSN-TBM

Inlet: BSP1" (come with swivel barb fitting)

Ext.Dia.of Spout: 24mm

Flow range:20-75L/min

Fluids Type:Diesel/ Kerosene

Unit: Liter/Gallon/Pints/Quarts

Meter Accuracy: $\pm 1\%$



Manual Nozzle With Oval Gear Flowmeter

Item No.: TSN-OGM

Inlet: BSP1" (come with barb fitting)

Ext.Dia.of Spout: 24mm

Flow range:20-60L/min

Fluids Type:Diesel/ Kerosene

Unit: Liter Meter Accuracy: $\pm 1\%$



Automatic Nozzle With Turbine Flowmeter

Item No.: TSN-11E1

Meter Inlet: BSP1"

Ext.Dia.of Spout: 24mm

Flow range:20-60L/min

Fluids Type:Diesel/ Kerosene

Unit: Liter/Gallon/Pints/Quarts

Meter Accuracy: $\pm 1\%$



Automatic Nozzle With Turbine Flowmeter

Item No.: TSN-120E1

Meter Inlet: BSP1"

Ext.Dia.of Spout: 30mm

Flow range:20-120L/min

Fluids Type:Diesel/ Kerosene

Unit: Liter/Gallon/Pints/Quarts

Meter Accuracy: $\pm 0.5\%$

01 TRANSFER NOZZLES



Automatic Nozzle With Turbine Flowmeter

Item No.: TSN-ME

Inlet: BSP1" (come with swivel barb fitting)

Ext.Dia.of Spout: 24mm

Flow range:20-75L/min

Fluids Type:Diesel/ Kerosene

Unit: Liter/Gallon/Pints/Quarts



Manual Nozzle With Mechanical Flowmeter

Item No.: TSN-MC3

Size: 1" 1.2" 1.5"

Flow range:10-100L/min

Fluids Type:Diesel/ Gasoline/Kerosene

Unit: Liter Meter Accuracy: $\pm 1\%$



Manual Nozzle With Mechanical Flowmeter

Item No.: TSN-C1

Size: 1" 1.2" 1.5"

Flow range:10-100L/min

Fluids Type:Diesel/ Gasoline/Kerosene

Unit: Liter Meter Accuracy: $\pm 1\%$



Insulator



Spout



Spout

02 POSITIVE DISPLACEMENT FLOW METERS & ACCESSORIES



M series Positive Displacement Flow Meter

Excellent stepless adjusting mechanism allows a micro adjustment of the meter High accuracy and repeatability over the widest range of flow; superior accuracy at constant flow Low maintenance, no metal-to-metal contact in measuring chamber, long lifetime service Low pressure loss, a true gravity flow meter.

Accuracy regardless of pressure fluctuations, temperature variation, viscosity choice of aluminum, cast iron and stainless steel materials of construction.



M-80-1

Meter with mechanical register, air eliminator and strainer



M-50-KPX-1

Meter with electronic register, strainer, air eliminator and solenoid valve



MA-50-CX-10

LPG Meter with mechanical register, differential valve, air eliminator and strainer



M-50-KX-1

Preset meter with preset mechanical register, preset valve, air eliminator and strainer



M-150-A-1

Meter with mechanical register 4" & 6" flange for option



M-80-G-1

Meter with mechanical register & printer, strainer, air eliminator



M-50-NX-1

Preset meter with mechanical preset register, printer, strainer, air eliminator and preset valve



M-50-PP-1

Meter with pulser output



M-50-8

Stainless steel meter with mechanical register, air eliminator and strainer

02 POSITIVE DISPLACEMENT FLOW METERS & ACCESSORIES



Technical Specification & Package Data

Model	M-40-1	M-50-1	M-80-1	M-100-1	M-150-1
Size	40mm/1.5"	50mm/2"	80mm/3"	100mm/4"	150mm/6" and 100mm/4" for option
Flow Range	25-250L/min	55-550L/min	115-1150L/min	170-1700L/min	300-3000L/min
Volume Per Revolution	0.309L	0.681L	1.839L	5.102L	14.87L
Max. Pressure	10Bar				
Accuracy	±0.2%				
Repeatability	≅ 0.07%				
Measurement Units	Liter/US Gallon/IMP Gallon				
Dimension	51*46*49cm	51*46*49cm	58*50*61cm	76*64*72cm	80*65*79cm
Net Weight	23kg	26kg	40kg	70kg	130kg
Gross Weight	25kg	28kg	47kg	93kg	180kg
Package	1pc/Strong Yellow Paper Carton			1pc/Wooden Case	



02 POSITIVE DISPLACEMENT FLOW METERS & ACCESSORIES



FL Air Eliminator

Aluminum, cast iron, stainless steel for option



GLQ-50



GLQ-150

GLQ Strainer

Aluminum, cast iron, stainless steel for option

Model	Diameter
GLQ-50	50mm/2"
GLQ-80	80mm/3"
GLQ-100	100mm/4"
GLQ-150	150mm/6"



Filter element

The proper filter element to use depend on the product and viscosity of the product over the expected range of metering temperatures.

Strainer Mesh	General Application
200M	LPG only
100M	Gasoline, Solvents, LPG
80M	Gasoline, Solvents
40M	Heating oil, Diesel oil, light oils
20M	Motor oils and viscous products

V series Piston Valves

The V-series mechanically actuated piston valves are available in 2" through 4" sizes and are designed for mounting on the meter outlet to provide tight shut off with smooth and easy operation regardless of system line pressure. Valves may be manually operated or connected via a mechanical linkage to a preset counter on the meter for single stage closure, or two stages closure to eliminate hydraulic shock.



V-80

Model	V-50	V-80	V-100
Size	1.5" and 2"	3"	4"
Max. Flow Rate	550L/min	1150L/min	1700L/min
Material	Aluminum		
Used with meter	M-40, M-50	M-80	M-100



K-80

K series Air Activated Differential Check Valve

The K-Series air-activated check valves are installed on the outlet side of the meter, and are designed to stop the flow of liquid whenever air is present to ensure accurate measurement.

Model	K-50	K-80
Size	1.5" and 2"	3"
Max. Flow Rate	550L/min	1150L/min
Material	Aluminum	Aluminum
Used with meter	M-40 M-50	M-80 M-100

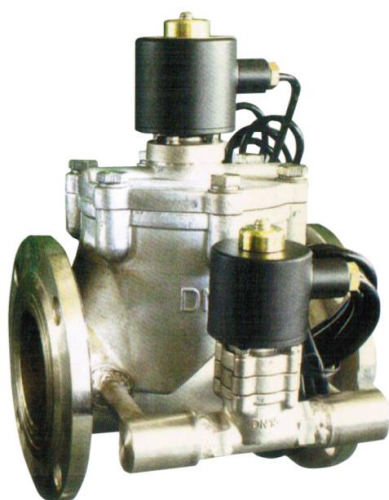


V-50-LPG

V-50-LPG Differential Valve

The differential valve mounted on the meter outlet and connected at the valve to the vapor eliminator on the meter with function to stop liquid flow whenever vapor is present in the system. The valve maintains sufficient pressure to ensure that high-vapor pressure products such as LPG or anhydrous ammonia (NH₃) always remain in the liquid state. The valve is spring loaded and designed to fail closed.

Model	V-50-LPG
Size	2"
Max. Flow Rate	760L/min
Working Pressure	25Bar/350PSI
Material	Aluminum
Used with meter	M-50



SV-50

SV-50/80 Stainless Steel Dual-flow Piston Solenoid Valve

Model	SV-50	SV-80
Size	DN50	DN80
Max. Flow Rate	380L/min	750L/min
Min. Flow Rate	50L/min	
Max. Pressure	10Bar	
Material	Stainless steel	
Voltage	AC 220V/50HZ	
Dimension	36*33*30cm	49*42*42cm
Net Weight	12kg	16kg
Gross Weight	13kg	23kg
Package	1pc/Carton	1pc/Wooden Case

02 POSITIVE DISPLACEMENT FLOW METERS & ACCESSORIES

FMC Series Rotary Vane Flow Meters

Application includes:blending,batching,dispensing,inventory control,and transferring of oils, solvents, chemicals, paints, fertilizer, etc



FMC-50

Meter with mechanical register, Air eliminator and strainer



FMC-100

Meter with mechanical register,air eliminator and strainer



FMC-50-NX-1

Preset meter with mechanical preset register, printer,air eliminator and preset valve



2" air eliminator and strainer



2" preset valve

- FMC series PD rotary vane meters are single case,angle-type,rotary vane,positive displacement meters.
- Superior accuracy and a wide range of products from gasoline to kerosene to fuel oils can be metered.
- Compact,versatile design can be readily fit into nearly all installations.
- Low pressure loss,a true gravity flow meter.
- Long service life,lowfriction ball bearings,fixed cam-type shaft construction give sustained accuracy and long time operation

Model	FMC-50	FMC-80	FMC-100
Size	50mm/2"	80mm/3"	100mm/4"
FlowRate Range	38-380L/min	75-750L/min	150-1500L/min
Max Working Pressure	10Bar/150PSI		
Accuracy	±0.2%		
Repeatability	≅ 0.07%		
Dimension	59*34*57cm	70*40*58cm	83*46*65cm
Net Weight	42kg	56kg	80kg
Gross Weight	57kg	70kg	96kg
Package	1PC/Wooden Case		

02 POSITIVE DISPLACEMENT FLOW METERS & ACCESSORIES

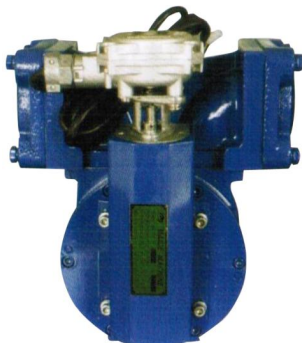
SM Series Rotary Vane Flow Meters

Application includes: Oil company, refineries, fuel depot, gas station and tank trucks, aircraft refueling boats, barges, oil transport companies



SM-80

Meter with mechanical register



SM-50

Meter with pulser



SM-50

Meter with mechanical register,

Features:

- *Stepless adjusting mechanism allows a micro adjustment of the meter.*
- *Specially designed Manifold separates from measuring chamber for flexible installation.*
- *Low pressure loss*
- *Simple construction of rotor blades for easy and low maintenance cost.*
- *Wearing compensation to maintain a good accuracy after years use.*
- *Meter for viscous products up to 800 Cst.*

Materials:

Manifold: Aluminum

Covers: Steel

Rotor: Aluminium

Balances: Carbon

Bearings: Stainless Steel

Seals/Gaskets: Viton, Buna 'N'

Technical Specification & Package Data

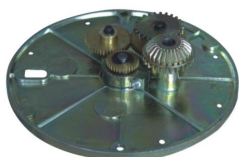
Model	SM-50	SM-80
Size	50mm/2"	80mm/3"
Volume Per Revolution	0.4L	2.27L
Flow Range	40-400L/min	133-1333L/min
Accuracy	$\pm 0.2\%$	
Repeatability	$\leq 0.07\%$	
Max. Pressure	8Bar	
Temperature Range	$-40^{\circ}\text{C} \sim +60^{\circ}\text{C}$	
Dimension	35*29*47cm	44*40*62cm
Net Weight	18.5kg	65kg
Gross Weight	19.5kg	75kg
Package	1PC/Carton	

02 POSITIVE DISPLACEMENT FLOW METERS & ACCESSORIES



JSQ-2 Mechanical register

- High visibility digital display for optimum readability in all ambient lighting.
- Latest technology,modern materials give maximum dependability at speeds to 250RPM of right wheel ord.
- Positive action knob reset.
- Built-in precision totalizer count up to 99,999,999 units, partial indicator 5 digit.
- Acetal resin components for smooth operation and extra long life.
- Fits most type of industrial flow meters.



Gear Plate

The gear plate is installed in the base of the mechanical register to convert meter rotary shaft output to an unit of measurement, changing units of measurement, is simple since all conversions are made with easily accessible gears.

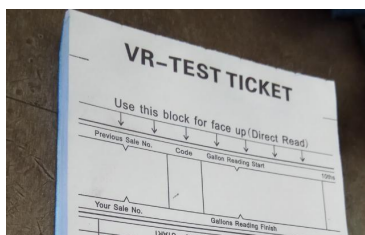


JSQ-3 Mechanical Preset register

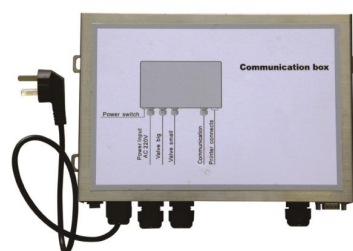
Available for either single-stage or two-stage valve closure. Sets a predetermined volume and controls a mechanically linked valve.



JSQ-4 Mechanical register with ticket printer



Mechanical Register with Ticket Printer is idea mechanical printer for printing transaction record.



JSQ-2/E

JSQ-2/E Electronic Register Systems adopts the modern high-performance ARM microprocessor with the function fo high operation speed, low power consumption, stable performance. Intrinsically safe designed, it is more stable and reliable with the strong functions. JSQ-2/E Electronic Register Systems is the ideal substitute products for the traditional mechanical register with advantage of high-precision measurement, stable performance, Widely installed on all kind of flow meters, with the LCD display, easy & friendly operation, widely used in stock terminal, oil tank truck, service station, boatyard, etc.

Power	AC220±20%,50HZ±1HZ
Temperature	-20℃～+55℃
Humidity	≦ 95%
Partial indicator	6 digital
Totalizer	8 digital
Precision	±0.1%

03 FLOW METERS

OGM Series Oval Gear Flow Meters

OGM series aluminum oval gear meter has the ability to handle a wide range of fluid viscosities with exceptional levels of repeatability and durability, applying in the petroleum, chemical, food industry, etc.



OGM-A-25

Oval gear meter with mechanical register



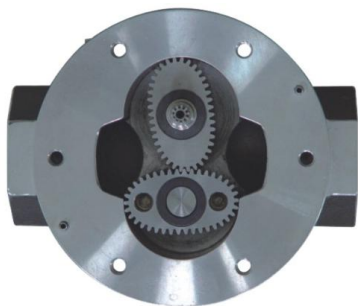
OGM-A-25-P

Oval gear meter with pulser output



OGM-E-50

Oval gear meter with LCD register



Oval gears structures makes counting more accurate and stable



Technical Specification & Package Data

Model	OGM-A-20	OGM-A-25	OGM-A-40	OGM-A-50
Size	3/4"	1"	1.5"	2"
Flow Range	10-80L/min	20-120L/min	25-250L/min	30-300L/min
Accuracy	$\pm 0.5\%$			
Repeatability	$\leq 0.17\%$			
Max. Viscosity	1000CPS			
Max. Pressure	34Bar	34Bar	18Bar	18Bar
Package	35*35*23cm	35*35*23cm	40*23*41cm	49*28*25cm
Net Weight	16kg	8kg	14kg	13kg
Gross Weight	17kg	9kg	15kg	14kg
Dimension	4PCS/CTN			2PCS/CTN

03 FLOW METERS



LC Series Cast iron Oval Gear Meters

LC Series Cast Iron oval gear meter has the ability to handle a wide range of fluid viscosities with exceptional levels of repeatability and durability, applying in the petroleum, chemical, food industry, etc.

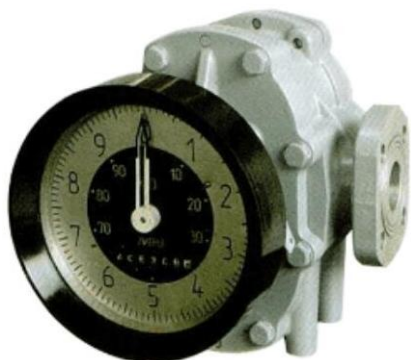


LC-40



LC-150

Accuracy (%)		±0.5			
(Mpa)		1.6			
Working Temp, (°C)		-30~+160			
Viscosity (mpa.s)		0.6~200			
Model	DN (mm)	Flow range (m3/h)			
		Petroleum products (mpa.s)			Chemical Liquids
		0.6~2	2~8	8~200	0.6~200
LC-10	10	0.15~0.4	0.08~0.4	0.04~0.4	0.1~0.4
LC-15	15	0.38~1.5	0.25~1.5	0.15~1.5	0.3~1.5
LC-20	20	0.75~3	0.4~3	0.3~3	0.6~3
LC-25	25	1.5~6	0.8~6	0.6~6	1.2~6
LC-40	40	3~15	2~15	1.5~12	2.4~12
LC-50	50	4.8~24	3.2~2.4	2.4~24	3.8~19
LC-80	80	12~60	8~60	6~60	10~50
LC-100	100	12~100	13~100	10~100	16~80
LC-150	150	30~150	20~150	15~150	30~150



OGM-R-25/40 Oval Gear Meter

Model	OGM-R-25	OGM-R-40
Size	25mm/1"	40mm/1.5"
Flow Range	20-120L/min	40-400L/min
Accuracy	±0.5%	
Repeatability	≅ 0.17%	
Max. Pressure	16Bar	6Bar
Package	2pcs/ctn	1pc/ctn
Net Weight	13.4kg	19.5kg
Gross Weight	14.4kg	20.5kg
Dimension	49.5*30*35cm	36*33*30cm

03 FLOW METERS



4-Digit flow meter (Nutating disk type)

Item No.: TSM-B

In/outlet: 1"

Flow range: 20-120L/min

Precision: $\pm 1\%$

Partial indicator: max. 9999L

Total: max.99999999L

Working temperature: -10~50°C



Nutating disk



4-Digit flow meter (Oval gears type)

Item No.: TSM-240

In/outlet: 1"

Flow range: 20-120L/min

Precision: $\pm 1\%$

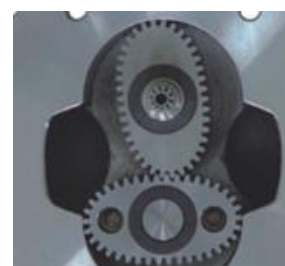
Partial indicator: max. 9999L

Total: max. 99999999L

Working temperature: -10~50°C

Max.Pressure: 3.5Bar

Gear Material: Hard anodized aluminum



Oval gears



4-Digit flow meter (Oval gears type)

Item No.: TSM-B-TC

In/outlet: 1"

Flow range: 20-120L/min

Precision: $\pm 1\%$

Partial indicator: max. 9999L

Total: max.99999999L

Working temperature: -10~50°C



Oval gears



4-Digit flow meter (Nutating disk type)

Item No.: TSM-R

In/outlet: 1.5"

Flow range: 20-120L/min

Precision: $\pm 1\%$

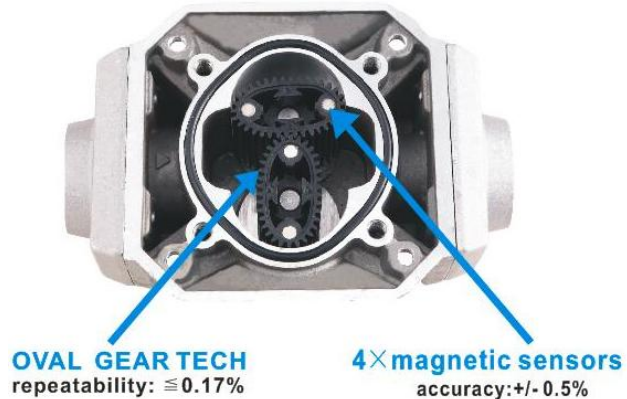
Partial indicator: max. 9999L

Total: max.99999999L

Working temperature: -10~50°C

03 FLOW METERS

TSM-F- P Oval gear flow meter with pulser output



EASY CALIBRATION

$\pm 0.5\%$ ACCURACY

$0.17\% \leq$ REPEATABILITY

Accurate to 0.5%, this meter featuring an oval gear measurement system, designed for extreme precise measuring of low viscosity fluids.. It can be widely applied in factories, coach yard, gas stations and household where diesels need to be measured. Easy to operate.

Technical Data:

1. Max. pressure: 3.5Bar
2. In/outlet: 1"
3. Flow Range: 20-120L/min
4. Application: Diesel/Kerosene (Do not use gasoline or products with low flash point!)
5. Flow direction: \leftarrow (Can be \rightarrow if requested)
6. Accuracy: $\pm 0.3\%$ Repeatability: $\leq 0.17\%$



Technical Data:

1. Max. pressure: 3Bar
2. In/outlet: 1"
3. Flow Range: 20-120L/min
4. Application: Diesel/Kerosene (Do not use gasoline or products with low flash point!)
5. Accuracy: $\pm 0.5\%$ Repeatability: $\leq 0.17\%$

TSM-F-PC Meter with pulser output

03 FLOW METERS

TSM-PST Preset Oval gear flow meter



Diesel version



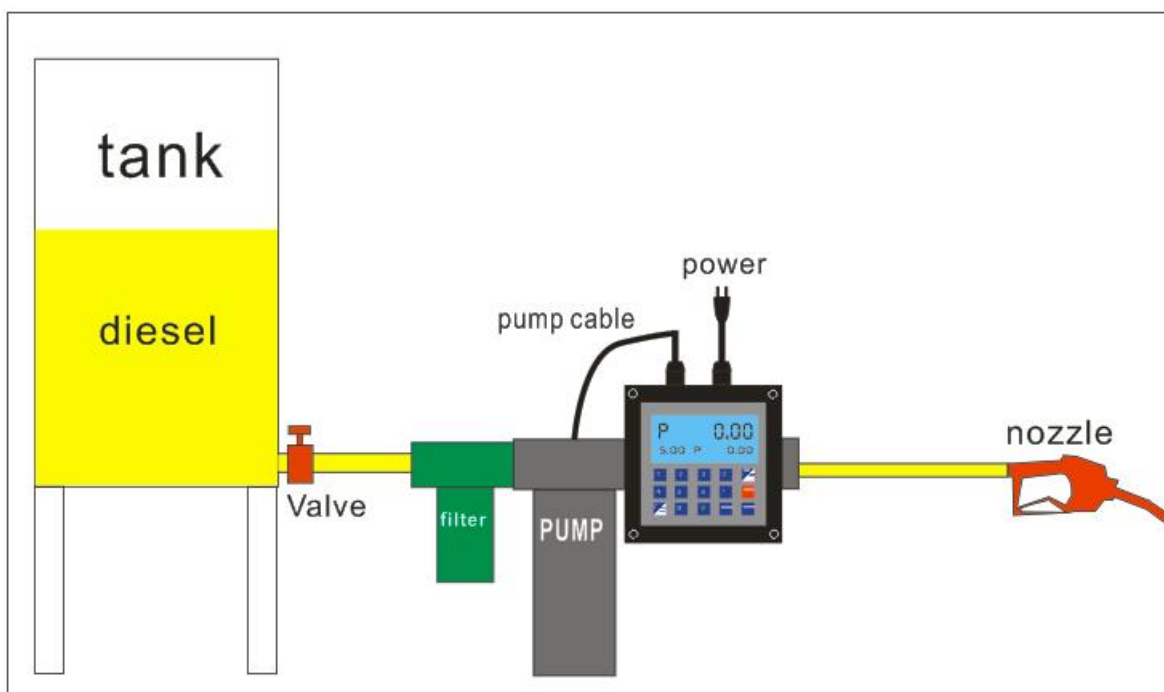
Gasoline version



The TSM-PST preset meter is designed for diesel counting with commercial or non-commercial purpose. It can be presetted by SALE or LITER. The meter can stop the diesel flow by cutting off the electricity to the pump. This meter can be used in factories, logistics companies, mining industris, construction machineries, etc.

Technical Data:

1. Power supply: DC12V/24V AC220V/50HZ
2. In/outlet: 1" / 1.5"
3. Flow Range: 20-80L/min (1") 20-150L/min (1.5")
4. Liquid type: Diesel/Kerosene (Do not use gasoline or products with low flash point!)
5. Flow direction: →
6. Accuracy: $\pm 0.5\%$ Repeatability: $\leq 0.17\%$



03 FLOW METERS

Digital turbine flow meter

Item No.: TSM-E

In/outlet: 1" 1.5"

Flow range: 20-120L/min 30-200L/min

Precision: $\pm 1\%$

Working temperature: $-10\sim 50^{\circ}\text{C}$

Fluid type: Diesel/gasoline/kerosene

Unit: Liter/Gallon/Pints/Quarts



1"



1.5"



Turbine flow meter

Item No.: TSM-E24

In/outlet: 1"

Flow range: 10-100L/min

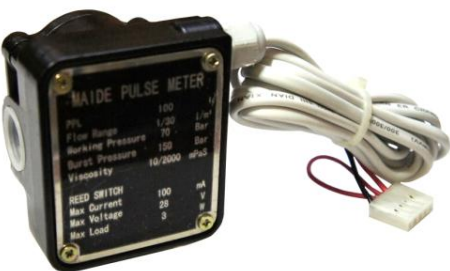
Precision: $\pm 1\%$

Working temperature: $-10\sim 50^{\circ}\text{C}$

Fluid type: Diesel/AdBlue



JYM/L-1 Oval gear meter



JYM/P-1 Oval gear meter with pulser output

JYM oval gear meter for controlling and measuring low, medium, and high viscosity, such as fuel, lubrication oil, with advantage of high precision and low pressure loss, compact light weight and easy installation.

JYM/L-1 oval gear meter with LCD display, 5-digital sub-total, 8-digital non-resettable totalizer.

JYM/P-1 oval gear meter with pulse output, reed switch built in, single channel output.

In/outlet: BSPF1/2"

Flow range: 1-30L/min

Precision: $\pm 0.5\%$

Repeatability: $\leq 0.17\%$

Max. working pressure: 70Bar

Discharge rate/Rev: 21ml/R

03 FLOW METERS



Flow meters for fuel dispenser



Model	MJ-85S	MJ-65	MJ-50
Flow Rate	5-90L/min	5-90L/min	5-60L/min
Discharge rate per revolution	0.5L	0.5L	0.5L
Adjustable Minimum Volume	0.07%	0.07%	0.05%
Accuracy	±0.2%	±0.2%	±0.2%
Repeatability	≅ 0.07%	≅ 0.07%	≅ 0.07%





Features

- ***Durable pumps for fast and quiet operation.***
- ***Sliding vane design provides sustained and trouble free operation,high reliability.***
- ***Adjustable relief valve protects pump from excessive pressure.***

- ***Fuel tank truck***
- ***Vessels refueling***
- **Aviation refueling**
- **Lube oils**
- **Petro chemicals/gasoline/biofuels/solvents**



YB-50 Single shaft



YB-80 Double shaft

A photograph of a green industrial pump assembly. It consists of a green motor on the right, connected via a red coupling to a green pump head on the left. The entire unit is mounted on a green base.

Coupling Drive



V-Belt

Model	YB-50		YB-65		YB-80		YB-100
	Without Motor	With Motor. V-Belt Driven	Without Motor	With Motor. V-Belt Driven	Without Motor	With Motor. Coupling Driven	Without Motor
Size	50mm/2"		65mm/2.5"		80mm/3"		100mm/4"
Pump Speed	400-640RPM		400-640RPM		400-640RPM		500RPM
Max. Flow	150-300L/min		300-500L/min		600-1000L/min		1500-1900L/min
Vacuum	0.5Bar						
Working Pressure	5Bar						
Motor Power	2.2KW		4KW		7.5KW		18.5KW
Dimension	44*35*35cm	76*51*55cm	46*34*37cm	76*54*56cm	49*42*42cm	125*46*79cm	58*55*61cm
Net Weight	31kg	86kg	40kg	126kg	68kg	238kg	160kg
Gross Weight	34kg	118kg	47kg	146kg	74kg	266kg	178kg
Package	1pc/Wooden Case						

04 ROTARY VANE PUMPS

SUB Series Vane Pumps



SUB-40

SUB-Series pump is positive displacement vane pump, applied to transfer gasoline, kerosene, diesel and other light oil, used to load & unload in stock terminal, also on oil tank trucks and mobile fuel unit.

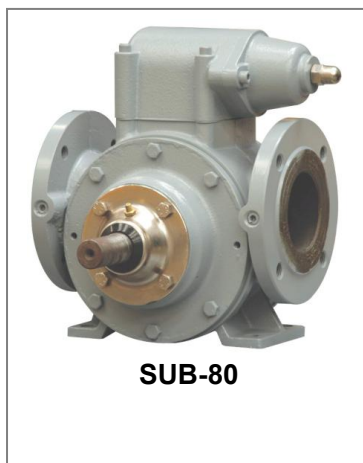
Features

An excellent self-priming performance, vacuum up 0.06Mpa, instead of vacuum pump to clean the tank in vessel, truck, etc.

To transport gas-liquid two-phase, up to 50%, completely solve air lock, cavitation.

Sliding vane design provides sustained performance and trouble free operation, high reliability

Adjustable relief valve protects pump from excessive pressure.



SUB-80

Model	SUB-40	SUB-50	SUB-80
Size	40mm/1.5"	50mm/2"	80mm/3"
Pump Speed	1400RPM	1400RPM	960RPM
Max. Flow Rate	180L/min	250L/min	500L/min
Vacuum	0.06MPa	0.06MPa	0.06MPa
Working Pressure	6Bar		
Motor Power	1.5kw	2.2kw	7.5kw
Dimension	40*33*33cm	32*32*36cm	49*42*42cm
Net Weight	20kg	20kg	40kg
Gross Weight	25kg	25kg	49kg
Package	1pc/Wooden Case		

FMD Mobile refueling Unit

MFD Series mobile fuel unit is containing our bulk positive displacement flow meter, pump & driven motor, power control panel, hose, hose reels & driven motor, applied in boat refueling in marine, public transportation vehicles, big truck, trains, military vehicles, light aircraft, with advantage of high flow rate, long service life, high accuracy, convenient & easy use, etc.



MFD-40

Model	MFD-40	MFD-50	MFD-80
Flow Rate	200L/min	400L/min	700L/min
Flow meter	M-40-1 meter 2"	M-50-1 meter 2"	M-80-1 meter 3"
Pump	SUB-40 vane pump	YB-50 vane pump	YB-80 vane pump
Ex proof motor	1.5KW, 50HZ, 380V 220V motor for option	2.2KW, 50HZ, 380V 220V motor for option	7.5KW, 50HZ, 380V 220V motor for option
Hose	1.5" 20m	2" 20m	3" 20m
Nozzle/Hose adaptor	1.5" automatic nozzle Hose adapter for option		Hose adapter
Hose reel	Manual reel (electric motor driven reel for option)		
Preset function	For option		
Electric computer	For option		
Dimension	131*99*125cm	131*99*125cm	140*110*125cm
New Weight	260kg	270kg	305kg
Gross Weight	290kg	300kg	335kg
Package	1pc/Wooden Case		

05 DIESEL TRANSFER PUMPS



Diesel Transfer Pump(Self-priming Type)

Item No: TSO-550A-1

Power:550w

V&Hz: 220V/50Hz

Capacity Max.: 60L/min

Suction Max.: 5m

Inlet/outlet:1"

Come with 2 hose connectors (1"×25mm) & filter



Diesel Transfer Pump(Self-priming Type)

Item No: TSO-370A

Power:370w

V&Hz: 220V/50Hz

Capacity Max.: 60L/min

Suction Max.: 5m

Inlet/outlet:1"

Come with 2 hose connectors (1"×25mm) & filter



Diesel Transfer Pump(Self-priming Type)

Item No: TSO-A80

Power:600w

V&Hz: 220V/50Hz

Capacity Max.: 76L/min

Suction Max.: 5m

Inlet/outlet:1"

Come with 2 hose connectors (1"×25mm) & filter



Diesel Transfer Pump(Self-priming Type)

Item No: TSO-A100

Power:750w

V&Hz: 220V/50Hz

Capacity Max.: 100L/min

Suction Max.: 5m

Inlet/outlet:1"

Come with 2 hose connectors (1"×25mm) & filter

05 DIESEL TRANSFER PUMPS



Diesel Transfer Pump(Self-priming Type)

Item No: TSO-R

Power:175w

Voltage:DC12/24V optional

Capacity Max.: 40L/min

Suction Max.: 5m

Inlet/outlet:3/4"

Come with 2 hose connectors (3/4"×25mm) & filter



Diesel Transfer Pump(Self-priming Type)

Item No: TSO-D70

Power:550w

Voltage:DC12/24V optional

Capacity Max.: 70L/min

Suction Max.: 5m

Inlet/outlet:1"

Come with 2 hose connectors (1"×25mm) & filter



Diesel Transfer Pump(Self-priming Type)

Item No: TSO-D80

Power:260w

Voltage:DC12/24V optional

Capacity Max.: 80L/min

Suction Max.: 5m

Inlet/outlet:1"

Come with 2 hose connectors (1"×25mm) & filter



Heavy Duty Diesel Transfer Pump (Self-priming Type)

Item No: TSO-BF-D100

Power:600w

Voltage:12V/24V/220V optional

Capacity Max.: **100L**/min

Suction Max.: 3m

Inlet/outlet:1"

05 DIESEL TRANSFER PUMPS



Diesel Transfer Pump(Self-priming Type)

Item No: TSO-DTP40

Power:175w

Voltage:DC12/24V optional

Capacity Max.: 40L/min

Suction Max.: 5m

Inlet/outlet:3/4"

Come with 2 hose connectors (3/4"×25mm) & filter



Diesel Transfer Pump(Self-priming Type)

Item No: TSO-DTP60

Power:300w

Voltage:DC12/24V optional

Capacity Max.: 60L/min

Suction Max.: 5m

Inlet/outlet:3/4"

Come with 2 hose connectors (3/4"×25mm) & filter

05 DIESEL TRANSFER PUMPS

TSO-60EX Gasoline Transfer Pump



Designed for agriculture, automotive and construction applications. 60LPM rotary vane pump that's built to perform. In lab tests the TSO-60EX lasted 24hours which is longer than the industry standard.



Item No:TSO-EX60 KIT

Capacity Max.:60L/min

Head Max:12m

Inlet/outlet:1"

Voltage:12V/24V/220V/115V

Current:23A/13A/4A/8A

Power:1/4HP

Suitable for Gasoline/diesel/kerosene



Suction pipes



2" Adaptor



Manual nozzle

TSO-55EX Gasoline Transfer Pump



Item No:TSO-EX55 KIT

Capacity Max.:55L/min

Head Max:12m

Inlet/outlet:1"

Voltage:12V

Power:1/4HP

Suitable for Gasoline/diesel/kerosene

05 DIESEL TRANSFER PUMPS



TSO-GP-B

Gasoline Pump

Item No.: TSO-GP-B

Power: 1/4 HP

Voltage: DC 12V

Max. Flow: 20GPM

Inlet & Outlet:NPT1"

Threaded Tank Adapter:NPT2"



TSO-GP-BM with meter

Gasoline Pump With Meter

Item No.: TSO-GP-BM

Power: 1/4 HP

Voltage: DC 12V

Max. Flow: 20GPM

Inlet & Outlet:NPT1"

Threaded Tank Adapter:NPT2"

05 DIESEL TRANSFER PUMPS

The fully portable frame design allows you to fuel a variety of vehicles and equipment for a range of applications. From recreational and marine vehicles to lawn and landscape equipments.



Diesel Transfer Pump With Meter Kit (Self-priming Type)

Item No: TSO550A

Power:550w

V&Hz: 220V/50Hz

Capacity Max.: 60L/min

Suction Max.: 5m

Inlet/outlet:1"

Come with 2 hose connectors (1"×25mm) & filter

Meter: partial register 4 digit, total register 8 digit

Meter Accuracy: $\pm 1\%$

Come with 4 meters discharge hose& manual nozzle



Diesel Transfer Pump With Meter Kit (Self-priming Type)

Item No: TSO-150D

Power:550w

Power:175w

Voltage:DC12/24V optional

Capacity Max.: 40L/min

Suction Max.: 5m

Inlet:3/4"

Meter: partial register 4 digit, total register 8 digit

Meter Accuracy: $\pm 1\%$

Come with 4 meters discharge hose& manual nozzle



AC Pump for gasoline (Self-priming Type)

Item No.: TSO-GP70

Rated Voltage& Hz: 220V/50HZ

Rated Power: 750W

IP:44

Max. Flow: 70L/min

REV:1420-1680R.P.M

ExdIIBT4

05 DIESEL TRANSFER PUMPS

Diesel dispenser for non-commercial use. Self-priming vane pump fitted with bypass, Automatic nozzle with swivel connection. Oval gear flow meter with digital readout system.



Item No:TSO-CB70

Capacity Max.:70L/min

Inlet/outlet:1"

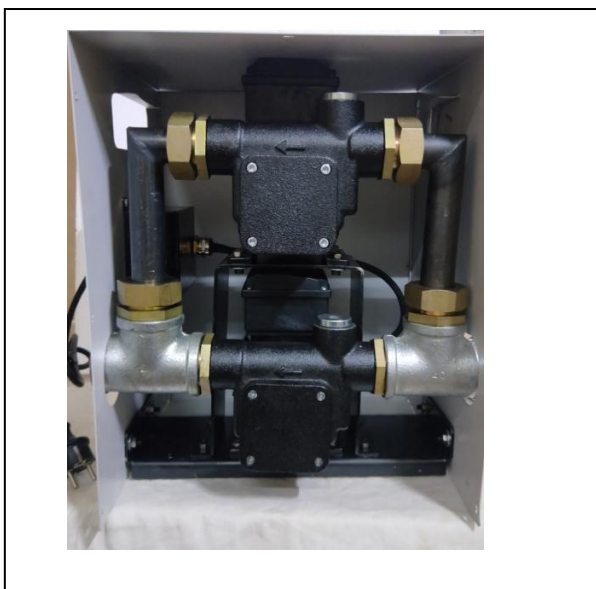
Voltage:12V/220V/

Power:1/2HP

Suitable for diesel/kerosene

Size:34*39*31cm

High flow rate portable dual pump kit with max. capacity 150L/min. Suitable for mining machineries, fuel depot, large storage tanks.



Item No:TSO-DYB150

Capacity Max.:150L/min

Inlet/outlet:1.5"

Voltage:12V/220V/

Power:1HP

Suitable for diesel/kerosene

Size:33*32*41cm

05 DIESEL TRANSFER PUMPS



Aluminum Rotary Pump

Item No.: THP-8-25

Dia. Of Pump: 125mm

Dia. Of Suction Pipe: 32mm (three-piece)

Dia. Of Spout: 25mm

Tank Fitting: 2inch NPT

Item No.: THP-8-32

Dia. Of Pump: 135mm

Dia. Of Suction Pipe: 36mm (three-piece)

Dia. Of Spout: 32mm

Tank Fitting: 2inch NPT



Cast Iron Rotary Pump

Item No.: THP-7-25

Dia. Of Pump: 120mm

Dia. Of Suction Pipe: 25mm (three-piece)

Dia. Of Spout: 25mm

Tank Fitting: 2inch NPT

Item No.: THP-7-32

Dia. Of Pump: 128mm

Dia. Of Suction Pipe: 32mm (three-piece)

Dia. Of Spout: 25mm

Tank Fitting: 2inch NPT



Lever Pump

Item No.: THP-12

Dia. Of Suction Pipe: 35mm (three-piece)

Dia. Of Spout: 19mm

Tank Fitting: 2inch NPT



06 FILTERS



Diesel fine Filter Kit
Item No.:TSF-300
 Filtration:30micron
 Max. Pressure:3.4Bar
 Max. Flow:56L/min
 In/outlet: 1"
 size:1 1/2"-16UNF



Item No.:TSF-300 PLUS



Diesel fine Filter
Item No.:TSF-GL-3
 Filtration:30micron
 Max. Pressure:3.4Bar
 Max. Flow:56L/min
 size:1"-12UNF



Filter Holder For GL-3
Item. No. TSFS-GL-1
 Material: aluminum
 In/outlet: 1"
 Size: 1"-12UNF
 Suitable for: TSF-GL-3



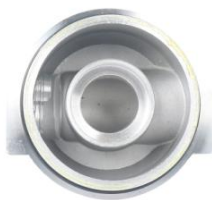
Filter Holder
Item. No. TSFS-GL2A
 Material: aluminum
 In/outlet: 1"
 Size: 1 1/2"-16UNF
 Suitable for: TSF-300



Filter Holder
Item. No. TSFS-GL-2
 Material: aluminum
 In/outlet: 1"
 Size: 1 1/2"-16UNF

06 FILTERS

Washable Filter Series



Washable Filter

Item. No. GL-8

Body Material: aluminum

In/outlet: 1"

Stainless mesh filtration: 169 micron

Clear Captor Filter



TSF-WS



Stainless 125um



PP 30um Cartridge



Flange & thread

Item. No. TSF-WS

In/outlet: 1"



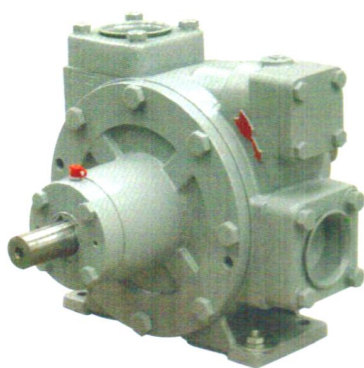
Washable Filter

Item. No. TSF-GL4

In/outlet: 1"

Stainless mesh filtration: 100 micron

07 LPG PUMP&ACCESSORIES



LYB-2000



V-belt Driven

LYB-2000 Vane Truck Pumps, for LPG, NH3, is specially designed to perform in severe operating conditions such as high differential pressure, pump over speeding, poor suction conditions.

Application:

- LPG and NH3 bulk transfer
- LPG and NH3 bulk transfer
- Gas station refueling
- LPG cylinders filling

Features:

- *Innovative cam design virtually eliminates cavitation*
- *New materials utilized in cam and blades and heavy duty bearings extend pump life*
- *Single mechanical, very easy seal replacement and maintenance*
- *Large diameter non-metallic pins are suitable for higher pump speeds*



Flow Rate

Speed	Differential Pressure	Flow Rate
800RPM	3.4Bar	323L/min
	6.9Bar	287L/min
650RPM	3.4Bar	261L/min
	6.9Bar	227L/min
500RPM	3.4Bar	189L/min
	6.9Bar	155L/min

Technical Specification & Package Data

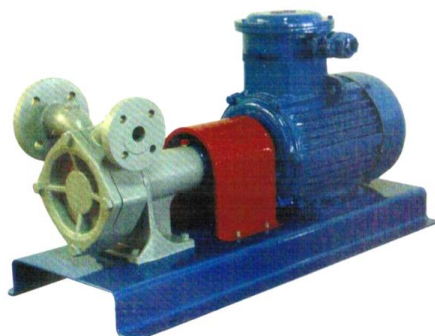
Inlet	NPT2"
Outlet	NPT2"
Max. Speed	800RPM
Motor	7.5KW
Temperature	-32℃~107℃
Max Working Pressure	28.6 Bar
Max. Differential Pressure	8.6 Bar
Internal Relief valve	Yes
Dimension	54*38*37cm
Net Weight	41kg
Gross Weight	50kg
Package	1PCS/Wooden Case

07 LPG PUMP&ACCESSORIES

LPG TURBINE PUMP



LWB-150



Coupling Driven

LWB-150 LPG Turbine Pump, for high differential pressure application using, for underground and aboveground tank application.

Application:

- Autogas dispensing
- Vaporize feed
- Bulk transferring
- LPG cylinders filling

Features:

A cost effective replacement to submersible designs. Meeting multiple demands for LPG application. Whether low or high flow rate with a high differential pressure, by underground and above ground tank application, LWB-150 pump is an idea pump for dual hose LPG dispensers. Continuous duty design Service ability is simple and cost effective

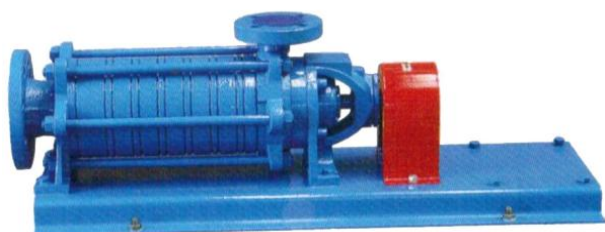


Technical Specification & Package Data

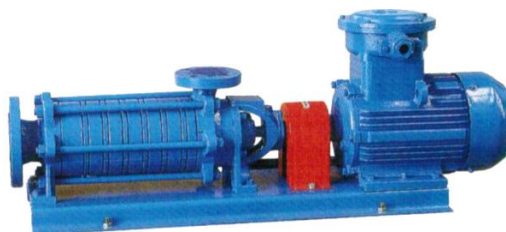
Model	Pump Only	Pump With Motor
Inlet	1.5"	
Outlet	1"	
Speed	60HZ 3450RPM or 50HZ 2880RPM	
Motor	5.5KW	
Temperature	-32°C -107°C	
Max Working Pressure	27.6 Bar	
Max. Differential Pressure	17.2Bar	
Dimension	Rr43*33*42cm	95*45*60cm
Net Weight	29kg	133kg
Gross Weight	35kg	153kg
Package	1pc/Wooden Case	

DB-65 LPG Side Channel Multistage Pump

The DB-65 multistage pump, centrifugal and side channel, is designed with 6 stages, having a horizontal configuration, shaft sealing by mechanical seal without cooling, for handling LPG(liquid gas), the liquids involving high-differential pressure, low NPSH conditions and aerated liquids up to 50% gas, such as pumping LPG from underground tanks.



DB-65



Coupling Drive

Application

- LPG cylinder filling
- Pumping LPG from underground tank
- Bulk filling operations
- Loading/unloading of LPG trucks and transport trailers
- Vaporizer feed pumps



Technical Specification & Package Data

Model	DB-65w/Motor	DB-65without Motor
Direction of Rotation	Anti-clockwise facing the end of the pump drive shaft	
Max. Operating Pressure	40 bars at 120°C	
Speed	1450RPM	
Power	380V,50HZ,4KW/220V 50HZ 4KW	
Ambient Temperature	20°C ~ +60°C	
Number of Stage	6 stages	
Connecting Flanges	DIN 2501, PN 40 as per DIN 2501,PN 40	
Bearings	Seleeve bearing at the pump end, ball bearing at the drive end	
Lubrication	Plain bearing at the pump end lubricated by the pumped product,ball bearing at the drive end lubricated for life.	
Dimension	112*42*57cm	100*48*45cm
Net Weight	136 kg	64 kg
Gross Weight	148 kg	78 kg
Package	1pc/Wood Case	

07 LPG PUMP&ACCESSORIES

LPG-2 flow meter is in construction of stainless steel bush and four-pistons positive displacement with check valve built in, with advantages of high reliability, good wearability, precise measurement, and long life.



LPG-2

Technical Specification & Package Data

Max Working Pressure	18 Bar
Flow Range	5-60L
Discharge rate per revolution	0.5L/R
Adjustable Minimum Volume	0.1%
Accuracy	±0.5%
Repeatability	≤0.17%
Material	Cast iron
Dimension	32*27*36cm
Net Weight	31kg
Gross Weight	35kg
Package	1PCS/CTN



LPG Separator

Check valve, filter, by pass pipe built in LPG separator

Technical Specification & Package Data

Max. Working Pressure	25Bar
By Pass Pressure	40Bar
Strainer	0.08mm
Dimension	48*38*35cm
Net Weight	17.5kg
Gross Weight	23kg
Package	1PC/Wooden Case



LPG Nozzle

Item No.:TSN-LPGN1

Operating Pressure: ≤2.2Mpa

Working environment temperature:-40~80℃

Inlet type:

A: internal thread: 3/4"

B: internal thread: 1"

C: M22*1.5

08 JERRY CAN& SPARE FUEL TANK



5L



10L



20L



Vertical Jerrican

Model	TSC-L5	TSC-L10	TSC-L20
Item Description	Vertical Jerrican 5L	Vertical Jerrican 10L	Vertical Jerrican 20L
Volume	5L	10L	20L
Thickness	0.6mm	0.8mm	0.8mm
Material	Cold-Rolled Steel		
Surface treatment	Powder Coated		
Size	24.3*11.6*31.3cm	30.4*13.1*39.6cm	36.9*16*46.7cm
Qty/Carton	8pcs	5pcs	4pcs
N.W.	1.2kg	2.45kg	3.55kg
Carton Size	50.5*48.9*32.8cm	67.8*32.6*42.2cm	67*37*49cm
Liquids type	Can be used to store gasoline,diesel,kerosene and ect.		
Accessory:	Fuel Spout		
UN No.	3AI/Y/250/YY/CN/BLXC CSCQ003-13	3AI/Y/250/YY/CN/BLXCCSCQ002-13	3AI/Y/250/YY/CN/BLXCCS CQ001-13



5L



10L



20L



Flanged Welded Jerry can

Model	TSC-LB5	TSC-LB10	TSC-LB20
Item Description	Flanged Welding Jerrican 5L	Flanged Welding Jerrican 10L	Flanged Welding Jerrican 20L
Volume	5L	10L	20L
Thickness	0.6mm		
Material	Cold-Rolled Steel		
Surface treatment	Powder Coated		
Size	16.5*34.5*19.5cm	16.75*34.7*31cm	34.83*17*45.7cm
Qty/Carton	8pcs	5pcs	4pcs
N. W.	1.75kg	2.25kg	3.05kg
Carton Size	71.5*70*21.5cm	73*36*30cm	72*37.5*49cm
Liquids type	gasoline,diesel,kerosene.		
Accessory	Fuel Spout		

08 JERRY CAN& SPARE FUEL TANK



5L



10L



20L



PANDA STYLE HORIZONTAL JERRICAN

Model	TSC-W5	TSC-W10	TSC-W20
Item Description	Horizontal Jerrican 5L	Horizontal Jerrican 10L	Horizontal Jerrican 20L
Volume	5L	10L	20L
Thickness	0.8mm		
Material	Cold-Rolled Steel		
Surface treatment	Powder Coated		
Size	40*24.6*12.25cm	39.5*24.5*18.7cm	42.8*30.4*25.8cm
Qty/Carton	8pcs	6pcs	4pcs
N.W.	1.7kg	2.2kg	2.95kg
Carton Size	53.5*42*63.5cm	53.5*42*65cm	64.5*45*54cm
Liquids type	Can be used to store gasoline,diesel,kerosene and ect.		
Accessory:	Fuel Hose		
UN No	3A1/Y/250/YY/CN/BLX CCSCQ001-14	3A1/Y/250/YY/CN/BLX CCSCQ005-13	3A1/Y/250/YY/CN/BLX CCSCQ004-13



5L



10L



20L



STRAIGHT PULL HORIZONTAL JERRICAN

Model	TSC-ZLW5	TSC-ZLW10	TSC-ZLW20
Item Description	Horizontal Jerrican 5L	Horizontal Jerrican 10L	Horizontal Jerrican 20L
Volume	5L	10L	20L
Thickness	0.8mm		
Material	Cold-Rolled Steel		
Surface treatment	Powder Coated		
Size	38.7*28.7*12.46cm	38.7*28.7*16.46cm	38.7*28.7*26.46cm
Qty/Carton	8pcs	6pcs	4pcs
N. W.	2.26kg	2.74kg	3.8kg
Carton Size	61.5*41*54.5cm	61.5*41*57.8cm	61.5*41*56cm
Liquids type	Can be used to store gasoline,diesel,kerosene and ect.		
Accessory	Fuel Hose		

08 JERRY CAN& SPARE FUEL TANK



5L



10L



20L

STAINLESS JERRICAN

Model	TSC-LS5	TSC-LS10	TSC-LS20
Item Description	Stainless Jerrican 5L	Stainless Jerrican 10L	Stainless Jerrican 20L
Volume	5L	10L	20L
Thickness	0.7mm	0.8mm	0.8mm
Material	Stainless Steel		
Surface treatment	Polishing		
Size	40.7*24.3*14.2cm	36*25.5*21cm	36*25.5*38cm
Qty/Carton	8pcs	6pcs	4pcs
N. W.	1.85kg	2.16kg	4kg
Carton Size	52*42.5*63.8cm	52*42.6*69cm	55*38.5*78.5cm
Liquids type	Can be used to store Water Juice,Wine,gasoline,diesel,kerosene and ect.		
Accessory	Fuel Hose		

1L Fuel Can



1L Fuel Can

Model	TSC-L1
Volume	1L
Thickness	0.8mm
Material	Cold-Rolled Steel
Surface treatment	Powder Coated
Size	Φ90mm*20.5mm
Qty/Carton	20pcs
N.W.	410g
Carton Size	60.5*42.5*20.5cm
Liquids type	gasoline,diesel and kerosene
Accessory	Fuel Hose
UN No	3A1/Y/250/YY/CN/LD CCSCQ001-17



Rolling Jerry Can



TSC-RJC Plastic 53 liter manual pump rolling Jerry Can

Easily transportable rolling jerry can.

Made of high-density polyethylene, rust and shock resistant.

Siphon handle makes spills and overflows a thing of the past.

Output: 7.5 liters per minute in siphon mode.



08 JERRY CAN& SPARE FUEL TANK

TSC-MPT Tanks made in roto-molded linear polyethylene, ideal for the refueling of small and light operating vehicles and crafts.



Model	TSC-MPT1
Volume	120L /32 US Gallon
Thickness	4mm
Technology &Material	roto-molded linear polyethylene
G.W.	24KGS
Carton Size	57*47*108cm (1pcs)
Liquids type	Gasoline/diesel /kerosene
Accessory	Rotary pump/ delivery Hose/ PP manual nozzle



Model	TSC-MPT2
Volume	120L /32 US Gallon
Thickness	4mm
Technology &Material	roto-molded linear polyethylene
G.W.	26KGS
Carton Size	57*47*108cm (1pcs)
Liquids type	/diesel /kerosene
Accessory	12VDC pump/ delivery Hose/ PP manual nozzle



Model	TSC-MPT3
Volume	120L /32 US Gallon
Thickness	4mm
Technology &Material	roto-molded linear polyethylene
G.W.	27KGS
Carton Size	57*47*108cm (1pcs)
Liquids type	/diesel /kerosene
Accessory	220VAC pump/ delivery Hose/ PP manual nozzle



09 FITTINGS AND CONNECTORS



Adaptor Swivels

Size:

- A: male: 1" female: 1"
- B: male: 3/4" female: 1"
- C: male: 1" female: 3/4"
- D: male: 3/4" female: 3/4"



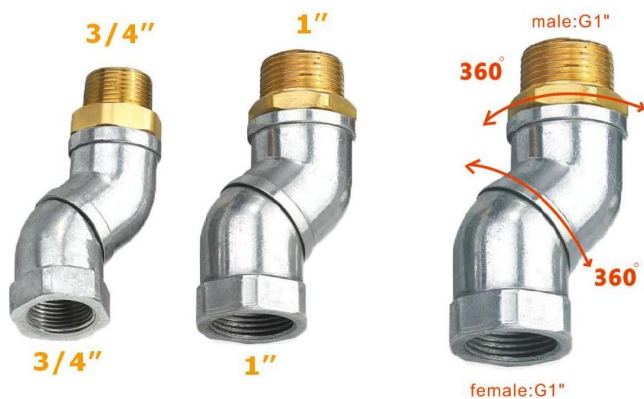
Hose Connection Swives

Size: 3/4" 1"



Rotary Swives

Size: 3/4" 1"



Universal Swivel

Model: US-1

Size: 3/4" 1"



Universal Swivel

Model: US-2

Size: 3/4" 1"



Universal Swivel

Model: US-3

Size: 3/4"

09 FITTINGS AND CONNECTORS



Stainless elbow

Model:EB-SS

Size: male 1" female:1"



Stainless Reducing Bushing

Model:RB-SS

Size: male 3/4" female:1"



Brass Non-return Valve

Model:BNV-SS

Size: female:1"



Stainless Fitting

Model:SF-24

Size: female:1"



Aluminum Quick connectors

Size:DN15-150



10 OIL PUMP&NOZZLE



JYB-1 electric gear oil pump is designed for various requirements of pumping oils & lubricants, with the construction of die-cast aluminum pump body, by-pass valve, sintered steel gears, mechanical seal on the motor shaft, with the advantage of quiet operation, high suction capacity and compact design.



JYB-1 Electric Gear Oil Pump

Flow Rate	9-15L/min
Pressure	12Bar
Noise	70dB
Power	AC220V,50HZ,750W Single Phase AC380V,50HZ,900W,Three Phase available
Vacuum	0.032MPa
Dimension	46*20*25cm
Net Weight	14kg
Gross Weight	15kg
Package	1PC/CTN



JYQ-1 Oil Transfer Nozzle

Inlet:BSPF/NPT 1/2"
Max. Flow: 15L/min
Working Pressure:0.7Mpa



JYQ-M-1 Oil Transfer Nozzle With Meter

Inlet:BSPF/NPT 1/2"
Max. Flow: 15L/min
Working Pressure:0.7Mpa

10 OIL PUMP&NOZZLE

JYQ-DM-2 Oil Transfer Nozzle With Digital Meter



Oil Nozzle With Digital Meter

Inlet:1/2"

Flow range:1-30LPM

Pressure range:0.5-70 Bar /
7-1015psi

Temperature Max.: 60°C/140°F

Viscosity:8-5000mPas

Power:2*AAA alkline batery

Rigid tube available

JYQ-MM-2 Oil Transfer Nozzle With Mechanical Meter



Oil Nozzle With Mechanical dail Meter

Flow range:1-30LPM

Pressure range:0.5-70 Bar /
7-1015psi

Temperature Max.: 60°C/140°F

Viscosity:8-5000mPas

Rigid tube available



Flexible Spout (auto/manual anti-drip valve)



Rigid Spout (auto/manual anti-drip valve)

11 ADBLUE PUMP&ACCESSORIES



AdBlue/DEF/AUS32 Transfer Pump
Item No.: TSO-ADB/TSO-ADB-2
 Power: 400W
 V/Hz:220V/50Hz
 Max. Flow:40L/min
 Max. Pressure:3.5Bar
 Fluids type:
 AdBlue/DEF/AUS32/Water



SS304 AdBlue/DEF/AUS32 Transfer Pump
Item No.: TSO-ADS
 Type:self priming
 Power: 550W
 V/Hz:220V/50Hz
 Max. Flow:45L/min
 Max. Pressure:2Bar
 Fluids type: AdBlue/DEF/AUS32/Coolant

IBC FITTINGS



11 ADBLUE PUMP&ACCESSORIES



Stainless steel automatic nozzle

Item No.: TSN-S

Inlet: BSP3/4"

Dia. Of Spout: 15.5 or 19mm

Max Flow: 40L/min



Stainless steel automatic nozzle with magnetic tank adaptor

Item No.: TSN-MS

Inlet: BSP3/4"

Dia. Of Spout: 19mm

Max Flow: 40L/min



Automatic nozzle

Item No.: TSN-SP

Inlet: barb dia.: 19mm

Dia. Of Spout: 15.5mm or 19mm

Max Flow: 20 L/min 40L/min



Automatic nozzle

Item No.: TSN-SP2

Inlet: 3/4"

Dia. Of Spout: 15.5 or 19mm

Max Flow: 45L/min



Automatic nozzle with turbine meter

Item No.: TSN-SPM

Inlet: 3/4"

Dia. Of Spout: 15.5 or 19mm

Max Flow: 45L/min

11 ADBLUE PUMP&ACCESSORIES



The TSA-AC AdBlue Shaker style siphon is designed for quickly transferring AdBlue from the can to the tank, just need to put the brass head into the can and hose end to the tank, then shake the hose which is close to the brass head end by up& downward, till the flow move by gravity. It is also available for diesel/ gasoline/water transferring



Step1 .connect the hose



Step2. shake the hose



Step.3 flow move

12 DIESEL FUEL DISPENSERS



The TSD-A1 mini diesel fuel dispenser, available with AC/ DC pump, counting by oval gear flow meter , which can be connected with vehicle battery as power supply in outdoor. Ideal for refueling of boats, agricultural machineries, mining/construction machineies, fuel depots, etc.



Model:TSD-A1

Voltage:DC12/24V AC220V/50Hz

Flow range:5-55L(by 220V motor) (*tested without nozzle)

Flow range:5-65L(by DC12/24V motor) (*tested without nozzle)

Meter accuracy: $\pm 0.5\%$ (oval gear meter)

Meter Repeatability: $\leq 0.05\%$

Fluids type: Diesel/Kerosene

L×W×H 35×36×30.5cm

come with auto nozzle

Features



On request



On request



On request



12 DIESEL FUEL DISPENSERS

The TSD-B1 diesel fuel dispenser, available with AC/ DC pump, counting by displacement flow meter , which can be connected with vehicle battery as power supply in outdoor. Ideal for refueling of boats, agricultural machineries, mining/construction machineies, fuel depots, etc.



Model:TSD-B1

Voltage:DC12/24V AC220V/50Hz

Flow range:5-75L (*tested without nozzle)

Meter accuracy: $\pm 0.3\%$

Meter Repeatability: $\leq 0.05\%$

Fluids type: Diesel/Kerosene

L×W×H 46×40×55cm

come with auto nozzle

Features



On request



On request



On request



12 DIESEL FUEL DISPENSERS

The TSD-B2 diesel fuel dispense kit come with hose reel, available with AC/ DC pump, counting by displacement flow meter , which can be connected with vehicle battery as power supply in outdoor. Ideal for refueling of boats, agricultural machineries, mining/construction machineies, fuel depots, etc.



Model:TSD-B2

Voltage:DC12/24V AC220V/50Hz

Flow range:5-75L (*tested without nozzle)

Meter accuracy: $\pm 0.3\%$

Meter Repeatability: $\leq 0.05\%$

Fluids type: Diesel/Kerosene

L×W×H 92×40×65cm

come with auto nozzle&hose reel (10mtrs 1" hose)

Features



On request



On request



On request



12 DIESEL FUEL DISPENSERS



Model:TSD-135A

Flow range:5-70L

Voltage: AC220V/50Hz

Meter accuracy: $\pm 0.2\%$

Meter Repeatability: $\leq 0.05\%$

Fluids type: Diesel/Gasoline/Kerosene

L×W×H 68.5×42×135cm



Model:TSD-135B

Flow range:5-70L

Voltage: AC220V/50Hz

Meter accuracy: $\pm 0.2\%$

Meter Repeatability: $\leq 0.05\%$

Fluids type: Diesel/Gasoline/Kerosene

L×W×H 70×42×135cm



Model:TSD-160A

Flow range:5-70L

Voltage: AC220V/50Hz

Meter accuracy: $\pm 0.2\%$

Meter Repeatability: $\leq 0.05\%$

Fluids type: Diesel/Gasoline/Kerosene

L×W×H 92×44×160cm

12 DIESEL FUEL DISPENSERS



Model:TSD-160B

Flow range:5-70L

Voltage: AC220V/50Hz

Meter accuracy: $\pm 0.2\%$

Meter Repeatability: $\leq 0.05\%$

Fluids type: Diesel/Gasoline/Kerosene

L×W×H 92×44×160cm



Model:TSD-190A

Flow range:5-70L

Voltage: AC220V/50Hz

Meter accuracy: $\pm 0.2\%$

Meter Repeatability: $\leq 0.05\%$

Fluids type: Diesel/Gasoline/Kerosene

L×W×H 85×42×190cm



Model:TSD-190A Heavy duty

Flow range:**5-100L**

Voltage: AC220V/50Hz

Meter accuracy: $\pm 0.2\%$

Meter Repeatability: $\leq 0.05\%$

Fluids type: Diesel/Gasoline/Kerosene

L×W×H 85×42×160cm

12 DIESEL FUEL DISPENSERS



Model:TSD-180B

Flow range:5-80L

Voltage: AC220V/50Hz

Meter accuracy: $\pm 0.2\%$

Meter Repeatability: $\leq 0.05\%$

Fluids type: Diesel/Gasoline/Kerosene

L×W×H 100×44×180cm



Model:TSD-180C

Flow range:5-80L

Voltage: AC220V/50Hz

Meter accuracy: $\pm 0.2\%$

Meter Repeatability: $\leq 0.05\%$

Fluids type: Diesel/Gasoline/Kerosene

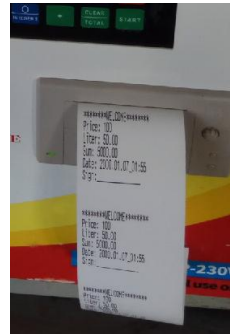
L×W×H 100×44×180cm

12 DIESEL FUEL DISPENSERS

Most of our diesel fuel dispensers can add APP function, so user's who have Wechat or Alipay can connect the machine with their mobile phone by scan the QR code where can monitor the refueling data on the mobile phone. Also it can be set up and be controlled by using bluetooth. A refueling records is available for accounting.

"No-cash" self-service is available. Before the driver is going to refueling the car, a payment QR code on the machine can be scanned to charge the money in advance by Wechat Payment or Alipay.

Every machine can add ticket printer as option.



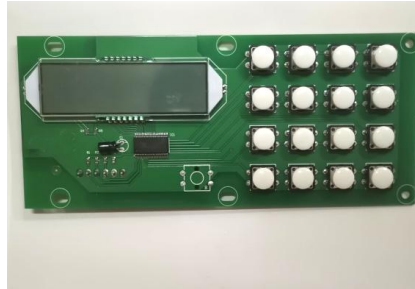
We provide customized production for different size, design, color and mark your brand



Control Unit Parts



Mainboard1



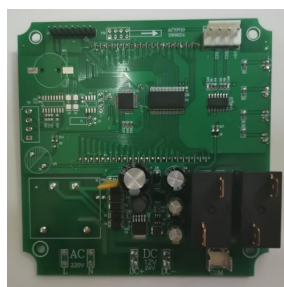
Keyboard



LCD Display



3in 1 Mainboard



Mainboard2

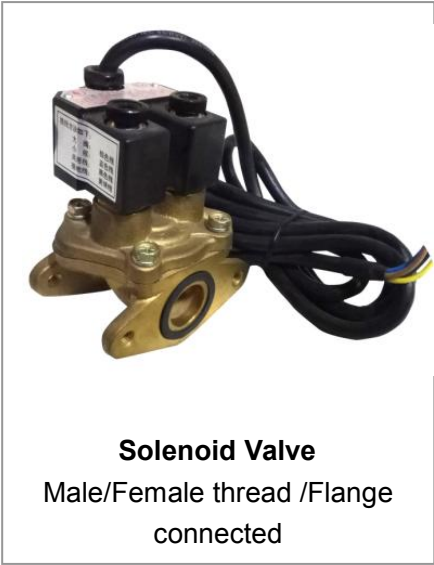


Mainboard

14 ACCESSORIES



Nozzle Holder
Aluminum/Plastic



Solenoid Valve
Male/Female thread /Flange
connected



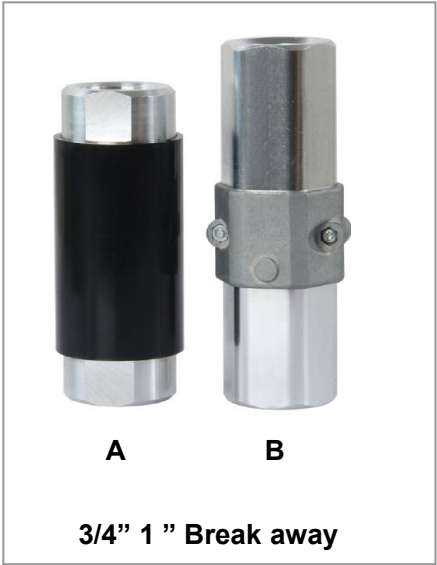
Flow Viewer
3/4" or 1"



1.5/2" Emergency Valve



1.5/2" Check Valve



3/4" 1" Break away



Flexible Pipe



3/4" 1" Discharge Hose



Non-return valve with mesh

14 ACCESSORIES



Lockable elbow



Flow meter fitting



Flow meter fitting



ZYB50 Pump



Spill Container



**3/4" ×15meters
1" ×15meters**

Hose Reel



EX-motors



Submersible Pump



Clamp rings